

OXFORD STUDENT ATLAS

Editorial Adviser
Dr Patrick Wiegand



OXFORD
UNIVERSITY PRESS

Great Clarendon Street, Oxford OX2 6DP

Oxford University Press is a department of the University of Oxford.
It furthers the University's objective of excellence in research, scholarship,
and education by publishing worldwide in

Oxford New York

Auckland Bangkok Buenos Aires Cape Town Chennai
Dar es Salaam Delhi Hong Kong Istanbul Karachi Kolkata
Kuala Lumpur Madrid Melbourne Mexico City Mumbai Nairobi
São Paulo Shanghai Singapore Taipei Tokyo Toronto

with an associated company in Berlin

Oxford is a registered trade mark of Oxford University Press
in the UK and in certain other countries

© Oxford University Press 2002

First published 2002

© Maps copyright Oxford University Press

All rights reserved. No part of this publication may be reproduced,
stored in a retrieval system, or transmitted, in any form or by any means,
without the prior permission in writing of Oxford University Press,
or as expressly permitted by law, or under terms agreed with the appropriate
reprographics rights organization. Enquiries concerning reproduction
outside the scope of the above should be sent to the Rights Department,
Oxford University Press, at the address above.

You must not circulate this book in any other binding or cover
and you must impose this same condition on any acquirer

ISBN 0 19 831877 4 (hardback)

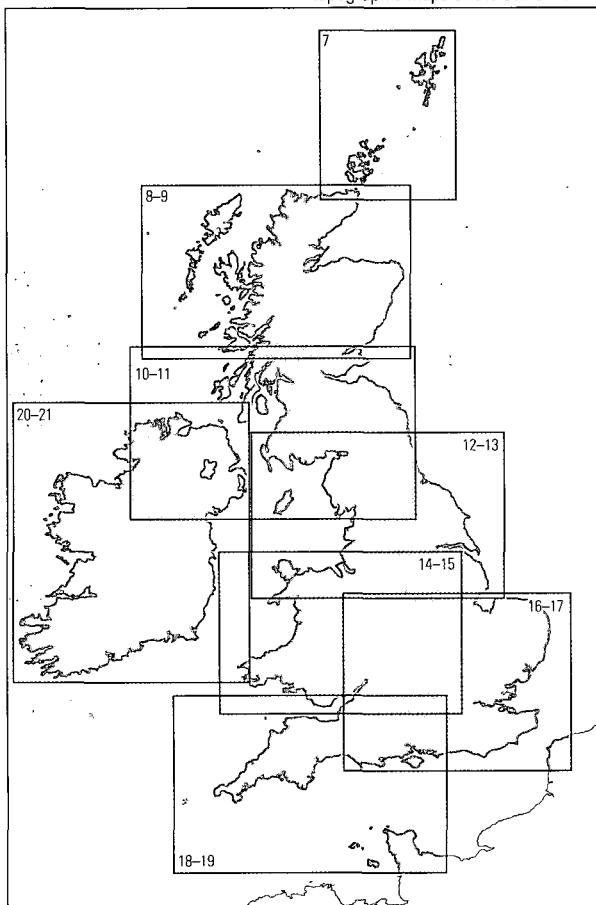
ISBN 0 19 831878 2 (paperback)

Printed in Italy

2 Contents

	<i>page</i>
Maps and satellite images _____	4
Map projections and graphics _____	5
British Isles Topographic maps	
British Isles _____	6
Orkney and Shetland Islands _____	7
Scottish Highlands and Islands _____	8–9
Northern Ireland Southern Scotland _____	10–11
Northern England _____	12–13
Wales West and East Midlands _____	14–15
South East England _____	16–17
South West England _____	18–19
Ireland _____	20–21

topographic maps of the British Isles



British Isles Thematic maps

Political _____	22–23	Employment _____	33
Physical _____	24	Population _____	34–35
Geology _____	25	Sport Tourism _____	36
Climate _____	26–27	Quality of life _____	37
Land use _____	28	Conservation _____	38
Farming _____	29	Pollution _____	39
Water Minerals _____	30	Transport _____	40
Energy _____	31	Trade _____	41
Manufacturing industry _____	32		

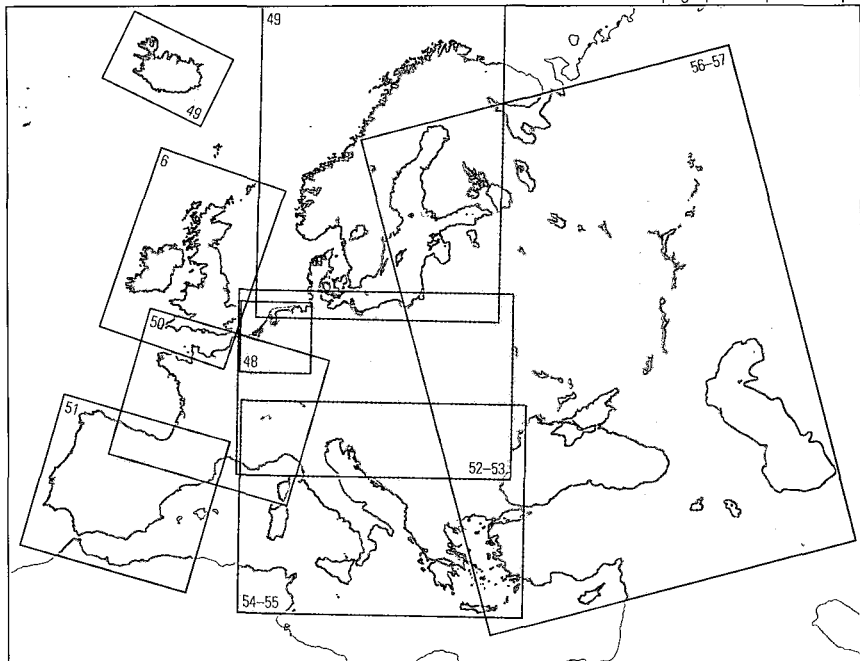
Europe Thematic maps

Physical _____	42
Climate Ecosystems _____	43
Political _____	44
Population Wealth _____	45
Economy _____	46
Tourism _____	47

Europe Topographic maps

Benelux and the Ruhr _____	48
Scandinavia and Iceland _____	49
France _____	50
Spain and Portugal _____	51
Middle Europe _____	52–53
Italy and the Balkans _____	54–55
East Europe and Turkey _____	56–57

topographic maps of Europe

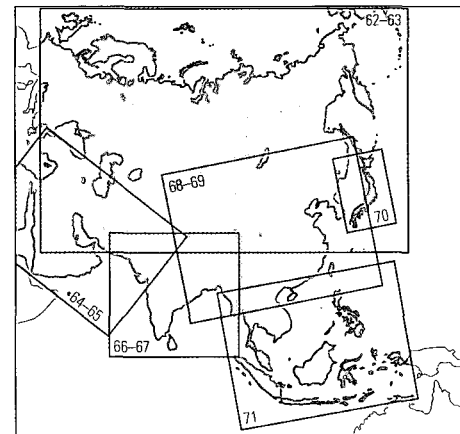


Asia Thematic maps

Physical _____	58
Political _____	59
Climate Ecosystems _____	60
Economy Population _____	61

Asia Topographic maps

Northern Eurasia _____	62–63
Middle East _____	64–65
South Asia _____	66–67
China _____	68–69
Japan _____	70
South East Asia _____	71



topographic maps of Asia

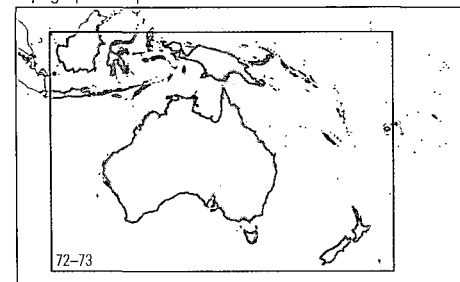
Oceania Topographic map

Australia and New Zealand _____	72–73
---------------------------------	-------

Oceania Thematic maps

Climate Ecosystems _____	74
Population Economy _____	74

topographic map of Oceania

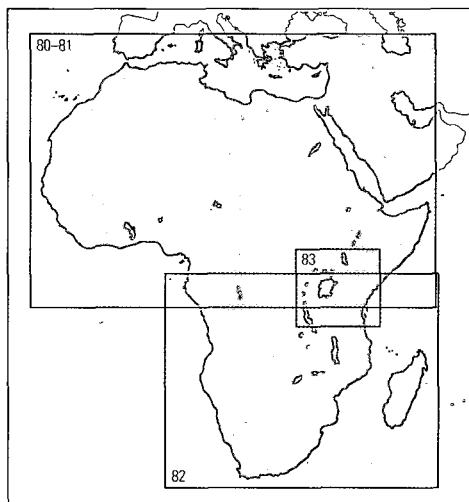


Africa Thematic maps

Physical Political	75
Satellite images	76
Climate Ecosystems	77
Economy Population	78
Tourism	79

Africa Topographic maps

Northern Africa	80–81
Southern Africa	82
East Africa	83



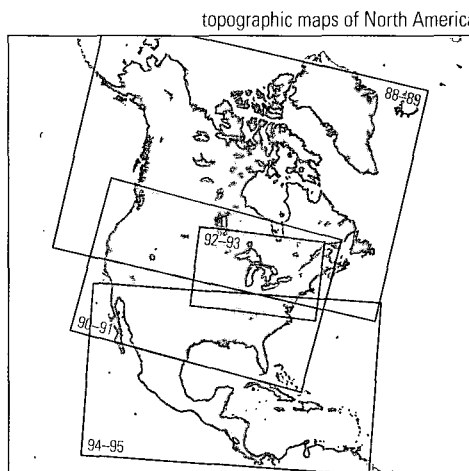
topographic maps of Africa

North America Thematic maps

Physical Political	84
Climate Ecosystems	85
Economy Population	86
Tourism	87

North America Topographic maps

Canada	88–89
United States of America	90–91
Great Lakes	92–93
Mexico, Central America, and the Caribbean	94–95



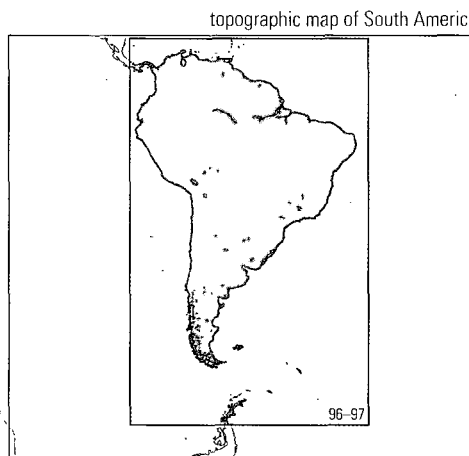
topographic maps of North America

South America Topographic map

South America	96–97
---------------	-------

South America Thematic maps

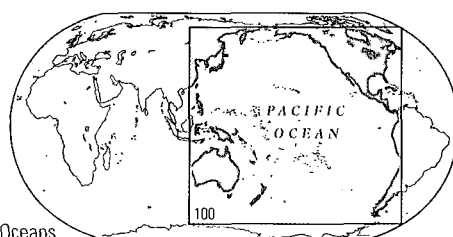
Political	97
Climate Ecosystems	98
Economy Population	99



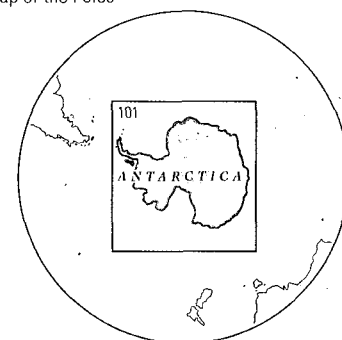
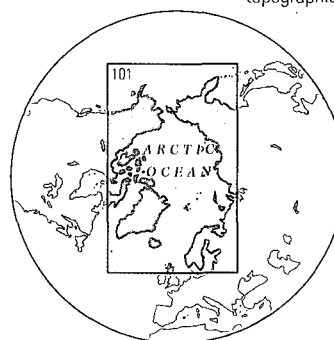
topographic map of South America

Oceans and Poles Topographic maps

Pacific Ocean	100
Arctic Ocean Antarctica	101



topographic map of the Oceans



topographic map of the Poles

World Thematic maps page

Political	102–103
Physical	104–105
Earthquakes and volcanoes	106–107
Temperature and ocean currents	108
Pressure, winds, and precipitation	109
Climate regions	110–111
Climate data	112
Climate hazards	113
Ecosystems	114–115
Population	116–117
Population trends	118
Population migration	119
Quality of life	120–121
Economic activity	122
Development	123
Energy	124
Trade Transport	125
Environmental issues	126–127
Tourism	128–129
Time and distance	130
Cyberspace	131

Flags	132–133
Datasets	134–141

Index	142–160
--------------	---------