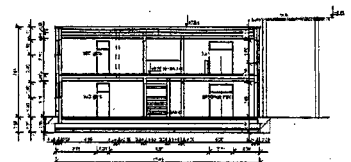
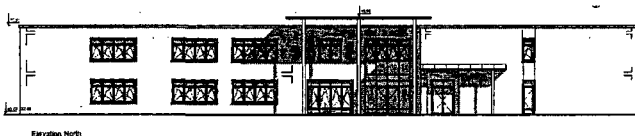
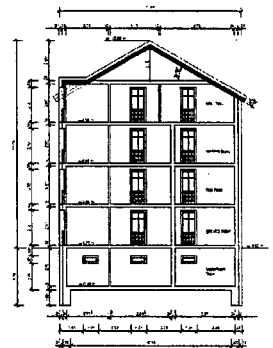
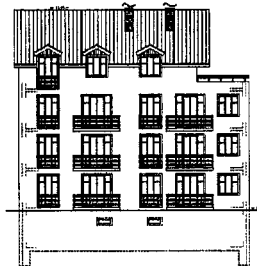
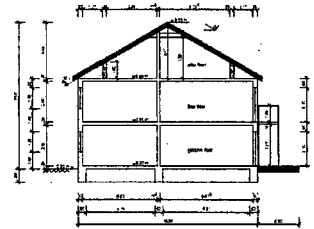


# Energy performance requirements for new buildings in 11 countries from Central Europe – Exemplary Comparison of three buildings

performed on behalf of the  
German Federal Office  
for Building and Regional Planning  
(Bundesamt für Bauwesen  
und Raumordnung, Bonn)

Darmstadt/Germany,  
5<sup>th</sup> December 2008



<b>Content</b>	<b>Page</b>
<b>1 Summary</b> .....	<b>5</b>
<b>2 About the project</b> .....	<b>6</b>
<b>3 Methodical approach</b> .....	<b>7</b>
3.1 Proceeding.....	7
3.2 Limits of evidence .....	9
<b>4 Model Building 1: semi-detached single family house</b> .....	<b>11</b>
4.1 Thermal envelope .....	11
4.2 Types of supply systems .....	12
4.3 Results for the thermal quality of the envelope.....	13
4.4 Primary energy demand (according to German regulations).....	16
<b>5 Model Building 2: multi-family house</b> .....	<b>18</b>
5.1 Thermal Envelope.....	18
5.2 Types of supply systems .....	20
5.3 Results for the thermal quality of the envelope.....	21
5.4 Primary energy demand (according to German regulations).....	23
<b>6 Model Building 3: School</b> .....	<b>25</b>
6.1 Thermal envelope .....	25
6.2 Types of supply systems .....	27
6.3 Results for the thermal quality of the envelope.....	28
6.4 Primary energy demand (according to German regulations).....	30
<b>7 Résumé</b> .....	<b>32</b>